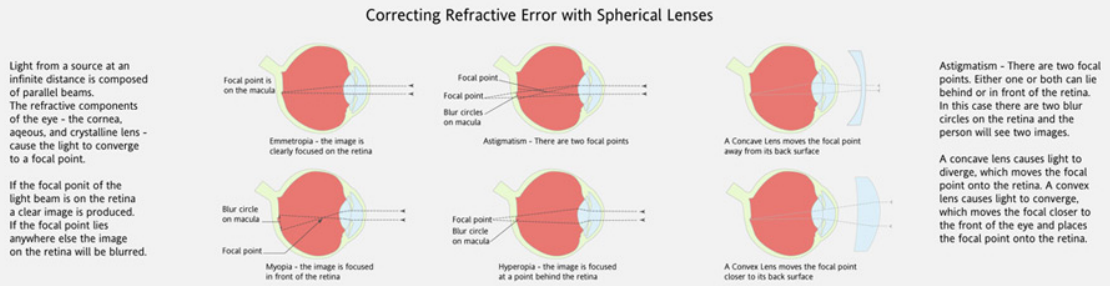
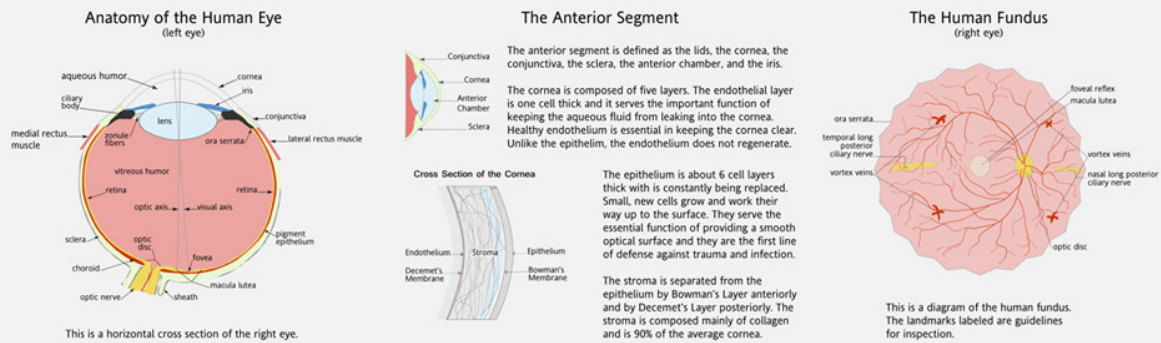


“The Human Eye” was created for a project in which we were to create a poster for a charitable or social cause or for educational purposes. With my background in optometry, this study in anatomy and refractive conditions was a natural.

The eye is very intricate and so there were many details for which to account. This piece was composed entirely in Illustrator. The colors are essentially black and white with red tones to indicate muscle or blood vessels. Pale salmon tones are used to demarcate certain regions, such as, the vitreous humor.

This project was challenging and also very fulfilling as I worked to find ways to use Illustrator to get the appearance I wanted. The composition uses very formal symmetrical balance.

# THE HUMAN EYE



Source: Steve A Stout, OD Duarte, Thomas David, William Tammam, and Edward A. Jagger, Duane's Clinical Ophthalmology, Philadelphia: Lippincott, 1980. Print.